

# Grab Bar Installation Instructions (GB Series)



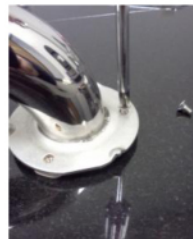
nie wieder  
bohren.



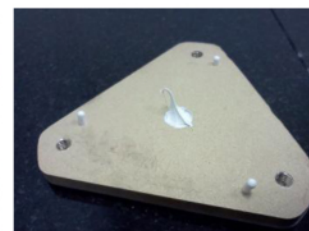
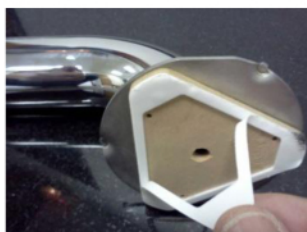
1. Adapter Set- 2 Adapters, 3-adhesive tubes, 3-Red Keys, 6 stainless screws, 1 alcohol pad



2. **Clean surface with alcohol pad, let dry fully. Wipe any residual off with dry clean cloth. Do not clean with household cleaners!**

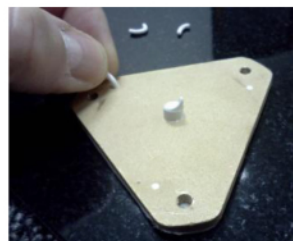


3. Align adapter and pre-attach to bar with screws. This step provides for easy alignment and eliminates the need to measure from post to post. Be sure to mark walls for desired height prior to pre-setting to wall.



5. Pierce adhesive tube with red key and then slide tube end into slit in tube. Insert tube end firmly into center hole in adapter and slowly insert adhesive by turning red key. Continue until all three vent holes show a white bead as pictured. **Do not press on adapter after inserting glue!**

4. Carefully remove cover ring from each side. Foam ring will hold adapters in place on wall and provide a border for the adhesive when inserted. Press bar at desired location firmly for 5 seconds. Remove bar. Foam ring will hold adapter in desired position.



6. Allow adhesive to cure for 24 hours undisturbed. **Important not to disturb the adapter after inserting glue.**

7. After adhesive has cured for 24 hours, remove the three beads of glue from the small vent holes



8. Attach bar to adapters using the screws included. Make sure to re-attach in same position as originally set to be sure screws align properly. Tighten firmly. Slide cover ring over base and turn clockwise until properly aligned and turn to lock in place. Job complete!



**no drilling required.**

***Not intended for Sheetrock, Plaster, Wall Paper or Painted Surfaces***

Distributed by  
[www.AmeraProducts.com](http://www.AmeraProducts.com)  
Phone: (800) 608-6568  
Fax: (409) 840-5545  
[info@ameraproducts.com](mailto:info@ameraproducts.com)